



EARLY CHILDHOOD EDUCATION DEPARTMENT

ACADEMIC OFFICE UPDATE

January 11, 2022

Dr. Samantha March

Early Childhood Education Director



AGENDA



- ❑ **Overview of Department Divisions**
 - ❑ PIIP, PAT & Pre-K
- ❑ **Outline of Pre-Kindergarten Program**
 - ❑ Historical & Current Enrollment
 - ❑ Student Services
 - ❑ Kindergarten Readiness
 - ❑ Funding Sources
 - ❑ SLPS Foundation Partnership
- ❑ **Questions**

PARENT-INFANT INTERACTION PROGRAM (PIIP)



- ❑ CRIB/Infant Toddler Care Center offers parenting students of Saint Louis Public Schools Missouri State licensed on site childcare for their children Birth to 5 years old.
- ❑ Provides educational and parenting support services to help students with children graduate and move forward with goals after high school
- ❑ Strives to involve parents and children in cooperative learning opportunities

PIIP SITES AND ENROLLMENT



Vashon High School

of Children
20

Roosevelt High School

of Children
12

- ☐ Both sites are fully licensed centers by the Missouri Department of Health and Senior Services- DHHS
- ☐ Wrap Around Services to support parenting teens
 - ☐ Prenatal Literacy and Adolescent Nurturing (PLAN)
 - ☐ Project CORE (Challenging Opportunities, Resources and Experiences)
 - ☐ The PIIP Tracking System
 - ☐ Male Involvement Component (MIC)
 - ☐ Mental Health Support

PARENTS AS TEACHERS PROGRAM (PAT)



- ❑ Home visiting program for families with children prenatal to kindergarten-entry
- ❑ Priority is to service disadvantaged and high needs families
- ❑ Services the Saint Louis City region
- ❑ Stated funded through reimbursement
- ❑ Each Parent Educator carries a caseload of 20-30 families each service year
- ❑ 181 screenings as of 12/21

PARENTS AS TEACHERS PROGRAM (PAT)



Goals

1. Increase parent knowledge of early childhood development and improve parent practices
2. Provide early detection of developmental delays and health issues
3. Prevent child abuse and neglect
4. Increase children's school readiness and success

Program Components:

- ❑ Weekly/Bi-weekly Private Visits
- ❑ Bi-Weekly Group Connections
- ❑ Annual Developmental & Sensory Assessments
- ❑ Resource Connections

PRE-KINDERGARTEN PROGRAM



Locations

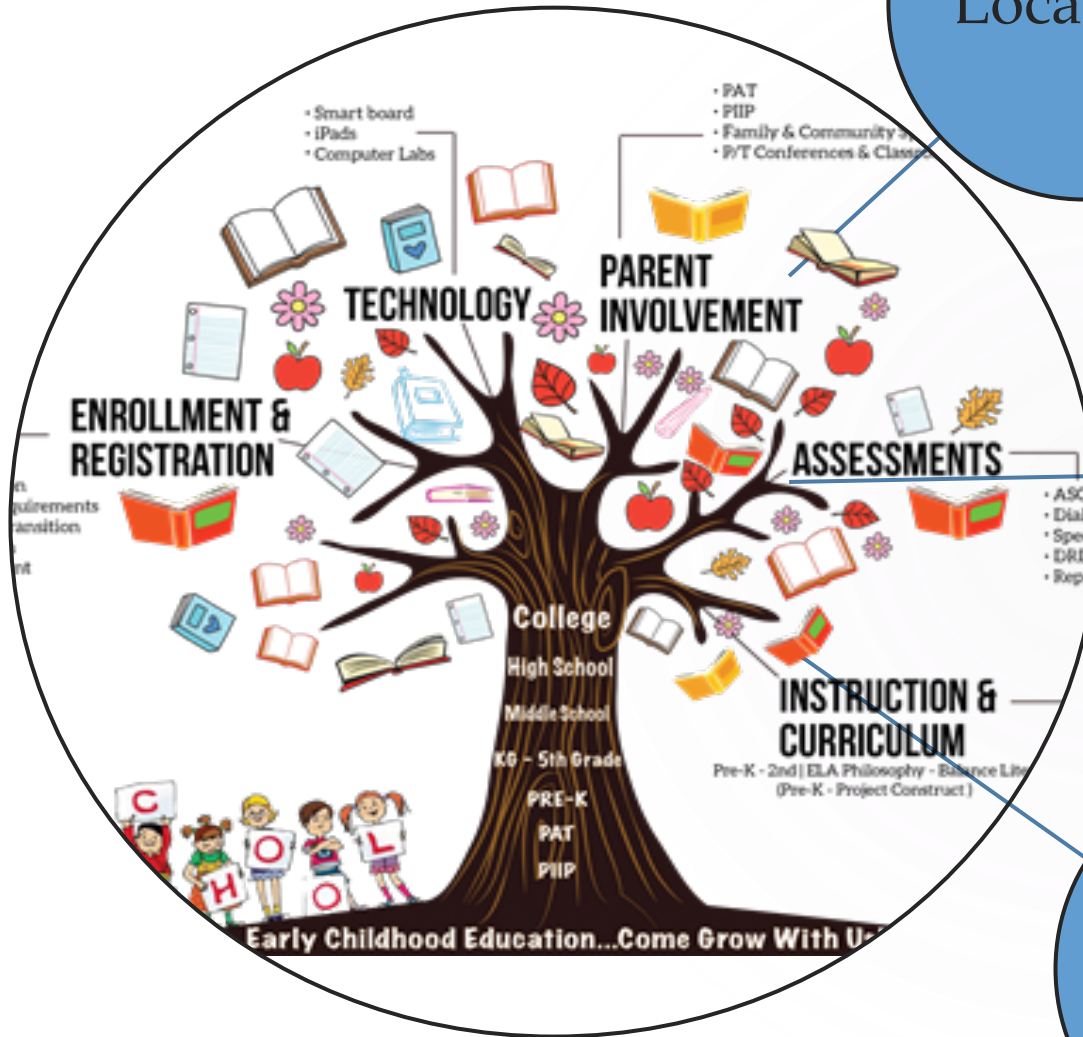
- 39 Elementary Schools
- 2 ECC

Services

- General Education
- Special Education
- Gifted
- ESOL

Structure

- Tuition free
- All day
- Transportation (P4)



EDUCATION SERVICES



General Education

- Eligibility
 - Saint Louis City Resident
 - P3- 3 years old by July 31st
 - P4- 4 years old by July 31st
- 39 Sites
 - 29 Magnet Schools
 - 10 Elementary Schools
- 1,006 Students
- 90 Classrooms
- 10:1 Student Teacher Ratio

Special Education

- Eligibility
 - Evaluation process
- 15 SLPS Sites
- 99 students on-site
- 6 Types of Classrooms
- 112 students-Itinerant Services
 - SLPS Classrooms
 - Meet-At Sites
 - Non-Affiliate Sites

Gifted and Talented

- Eligibility
 - Application and Testing Process
- 2 sites
- 18 students
- Emphasis on Accelerated Learning

English Language Learners

- Eligibility
 - Self Identification
 - Assessment
 - School Placement
- 9 ESOL Centers
- 108 Potential ELL students assessed
- 55 Students Supported
- Methods of Support
 - Direct student support
 - Classroom support
 - Ongoing Parent Communication



ENROLLMENT

Historical Data

Program Year	2007-2008	2012-2013	2019-2020	2020-2021	2021-2022
# of classrooms	<100	~100	136	119	117
Capacity	1,282	2,096	2,245	2,157	1,862
Enrollment	1,282	2,096	2,245	1,341	1,664

- ☐ 2011- District leadership declared ECE expansion
- ☐ Increased capacity to support the needs & demands of community
 - ☐ 2012-2013
 - ☐ 2019-2020
- ☐ 2020-2021- Decreased capacity due to the pandemic
 - ☐ 17 closed classrooms

KINDERGARTEN READINESS



Historical and Current Performance Data

P3/P4	Fall 2017	Spring 2018	Fall 2018	Spring 2019	Fall 2021
Social/Emotional	69%	89%	61%	81%	59%
Literacy	72%	89%	70%	82%	61%
Mathematics	65%	87%	62%	80%	57%

DRDP- Desired Results Developmental Profile

- ☐ Observational assessment tool
- ☐ Used to document, reflect and report on the learning, development and progress of students
- ☐ Administered twice per year

FUNDING SOURCES



ECE FUNDING SOURCES	FY22 CURRENT BUDGET	
Early Child Spec Education	\$3,812,727	Provides program operations for:
General Operating Budget (GOB)	\$7,683,121	
Taylor Grant (Foundation Funds)	\$3,371,170	
Title I	\$2,982,196	
ESSER II	\$250,000	
GRAND TOTAL	\$14,728,044	

- Provides program operations for:
- ☐ Staffing
 - ☐ Salary
 - ☐ Benefits
- ☐ General Supplies



SAINT LOUIS PUBLIC SCHOOLS FOUNDATION PARTNERSHIP

ST. LOUIS PUBLIC SCHOOLS
FOUNDATION
CHILDREN. SCHOOLS. ACHIEVEMENT.



**2020-
2021**

- Creative Literacy Spaces
- Flexible Soft Seating- COVID
- iPad Headphones
- Professional Development Cohorts
- General ECE Support

**2021-
2022**

- SAVAAS Curriculum
- Creative Literacy Spaces- Cohort 4
- Teacher Leadership Advisory Committee
- General ECE Support

- ❑ The SLPS Foundation has invested approximately \$600,000/year over the last 8 years.
- ❑ The return on investment is evident through a longitudinal study which tracked cohorts of SLPS PreK grads from 2010 – 2016.
- ❑ Every class of SLPS Pre-K grads at every grade level (grades 2 – 9) has achieved a significantly stronger (on average 15% higher) score on reading assessments.



QUESTIONS?